
SOAP: Generovanie klientského kódu pomocou SoapUI a JAX-WS 2.0 v Jave 6, 7 a 8

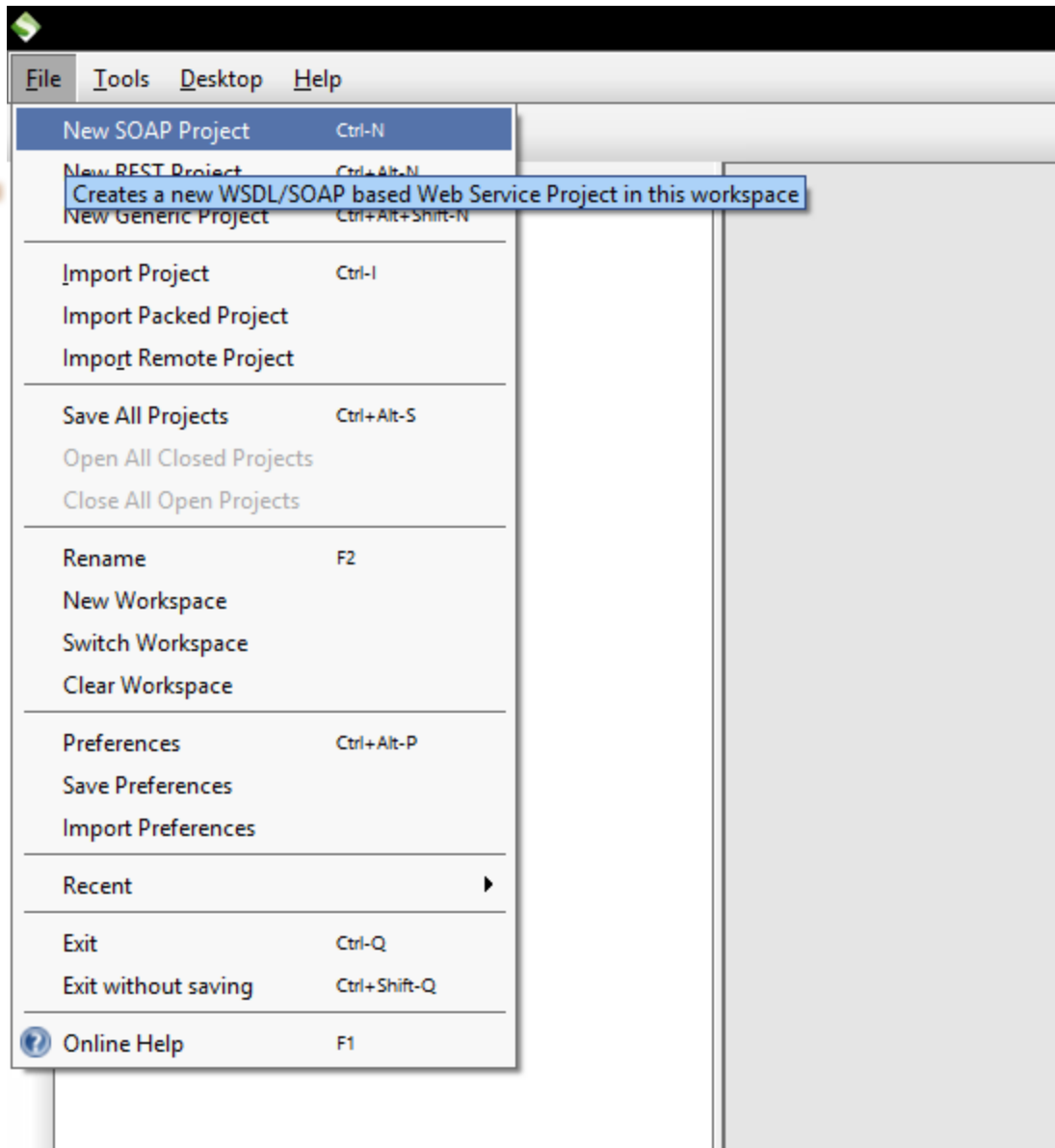
Róbert Novotný
(UINF/KOPR)

Vytvorte klienta pre službu
v JAX-WS 2.0 pomocou SoapUI

Generovanie klienta služby SOAP

- Java 6, 7 a 8 obsahuje nástroj **wsimport**
- Vygeneruje zdrojové kódy klienta na základe WSDL

```
%JAVA_HOME%\bin\wsimport.bat  
$JAVA_HOME/bin/wsimport
```



File Tools Desktop Help

New SOAP Project Ctrl-N

New REST Project Ctrl+Alt-N

Creates a new WSDL/SOAP based Web Service Project in this workspace

New Generic Project Ctrl+Alt+Shift-N

Import Project Ctrl-I

Import Packed Project

Import Remote Project

Save All Projects Ctrl+Alt-S

Open All Closed Projects

Close All Open Projects

Rename F2

New Workspace

Switch Workspace

Clear Workspace

Preferences Ctrl+Alt-P

Save Preferences

Import Preferences


Recent ▶

Exit Ctrl-Q

Exit without saving Ctrl+Shift-Q

Online Help F1

New SOAP Project ✕

New SOAP Project 

Creates a WSDL/SOAP based Project in this workspace


Project Name:

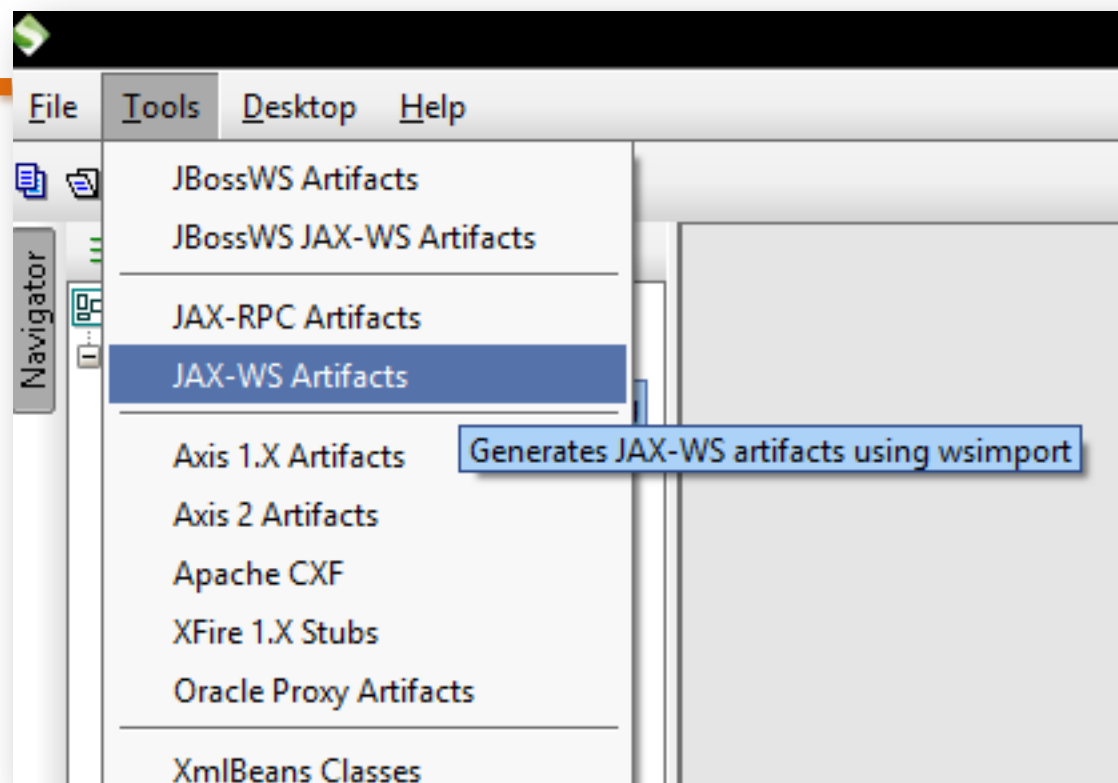
Initial WSDL:

Create Requests: Create sample requests for all operations?

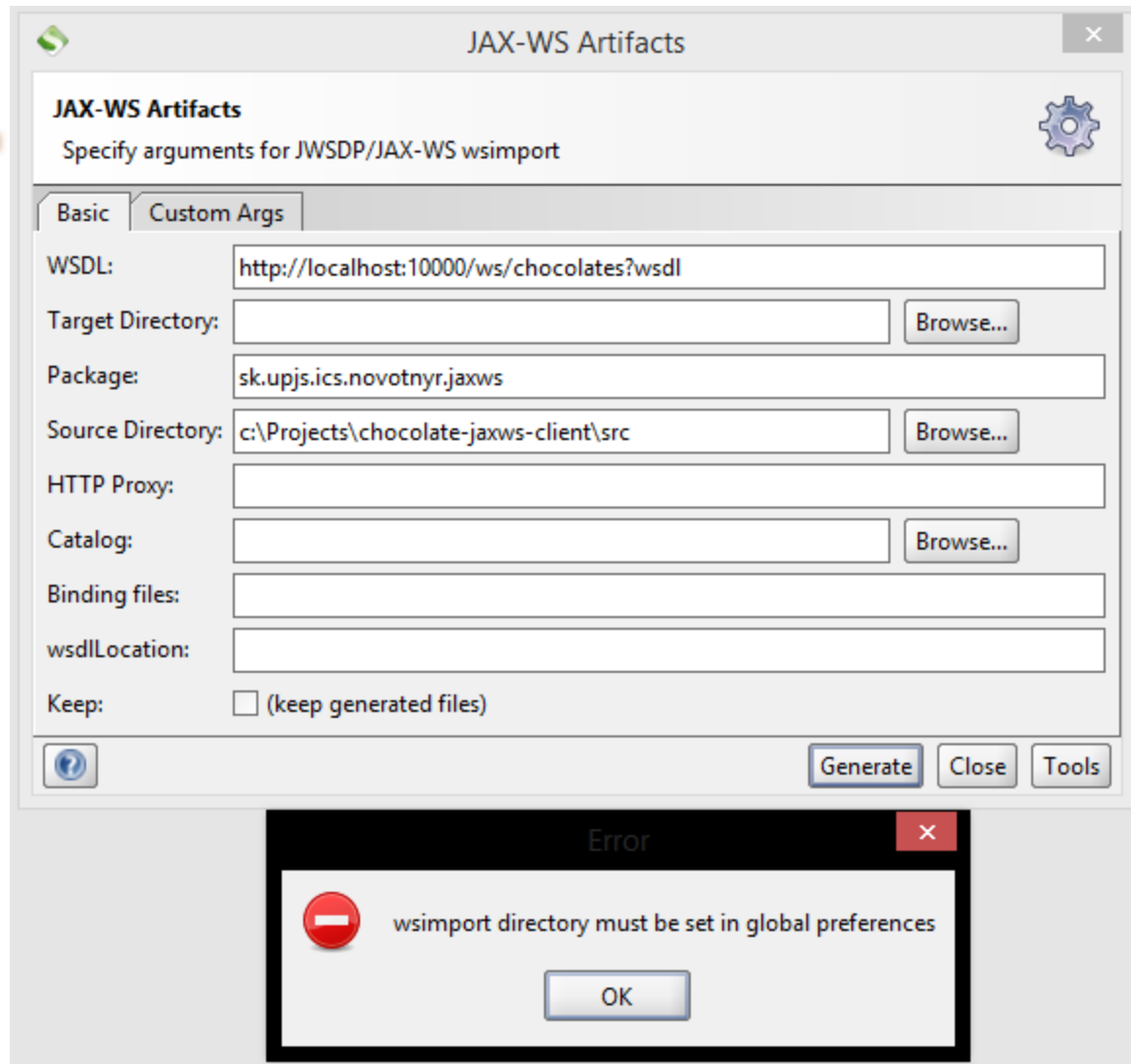
Create TestSuite: Creates a TestSuite for the imported WSDL

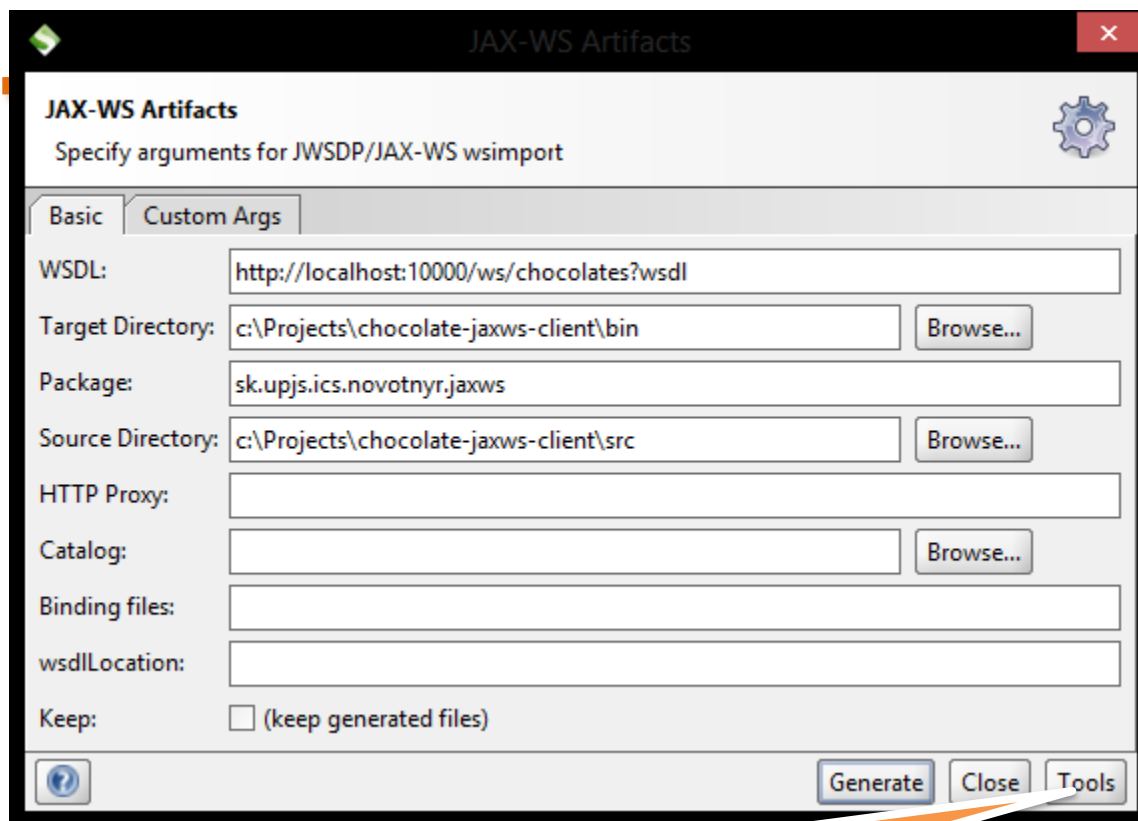
Relative Paths: Stores all file paths in project relatively to project file (requires save)





Generates JAX-WS artifacts using wsimport





zmenit' cestu k wsimport

SoapUI Preferences

Set global SoapUI settings

HTTP Settings

Proxy Settings

SSL Settings

WSDL Settings

UI Settings

Editor Settings

Tools

WS-I Settings

Global Properties

Global Security Settings

WS-A Settings

JBossWS wstools:

JAX-RPC WSCompile:

JAX-WS WSImport:

C:\java\jdk7\bin\

Axis 1.X:

Axis 2:

.NET 2.0 wsdl.exe:

XFire 1.X:

CXF 2.X:

zmenit' cestu k wsimport

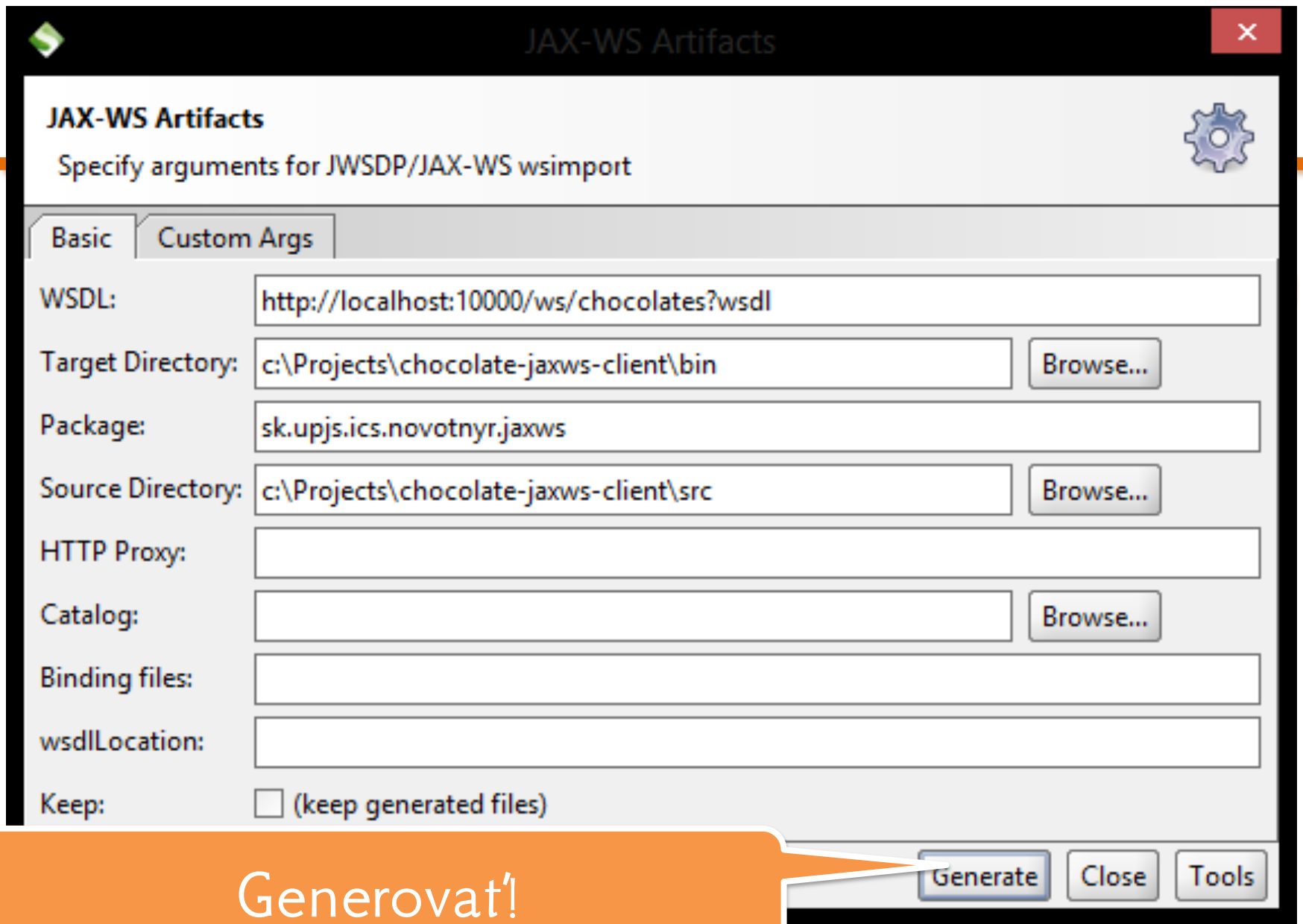
wsimport je v adresári
JDK, vedľa *javac*

XmlBeans 2

JDK 1.5 java

Apache Tcp

Oracle wsa.jar:



JAX-WS Artifacts

Specify arguments for JWS DP/JAX-WS wsimport



Basic

Custom Args

WSDL:

Target Directory:

Package:

Source Directory:

HTTP Proxy:

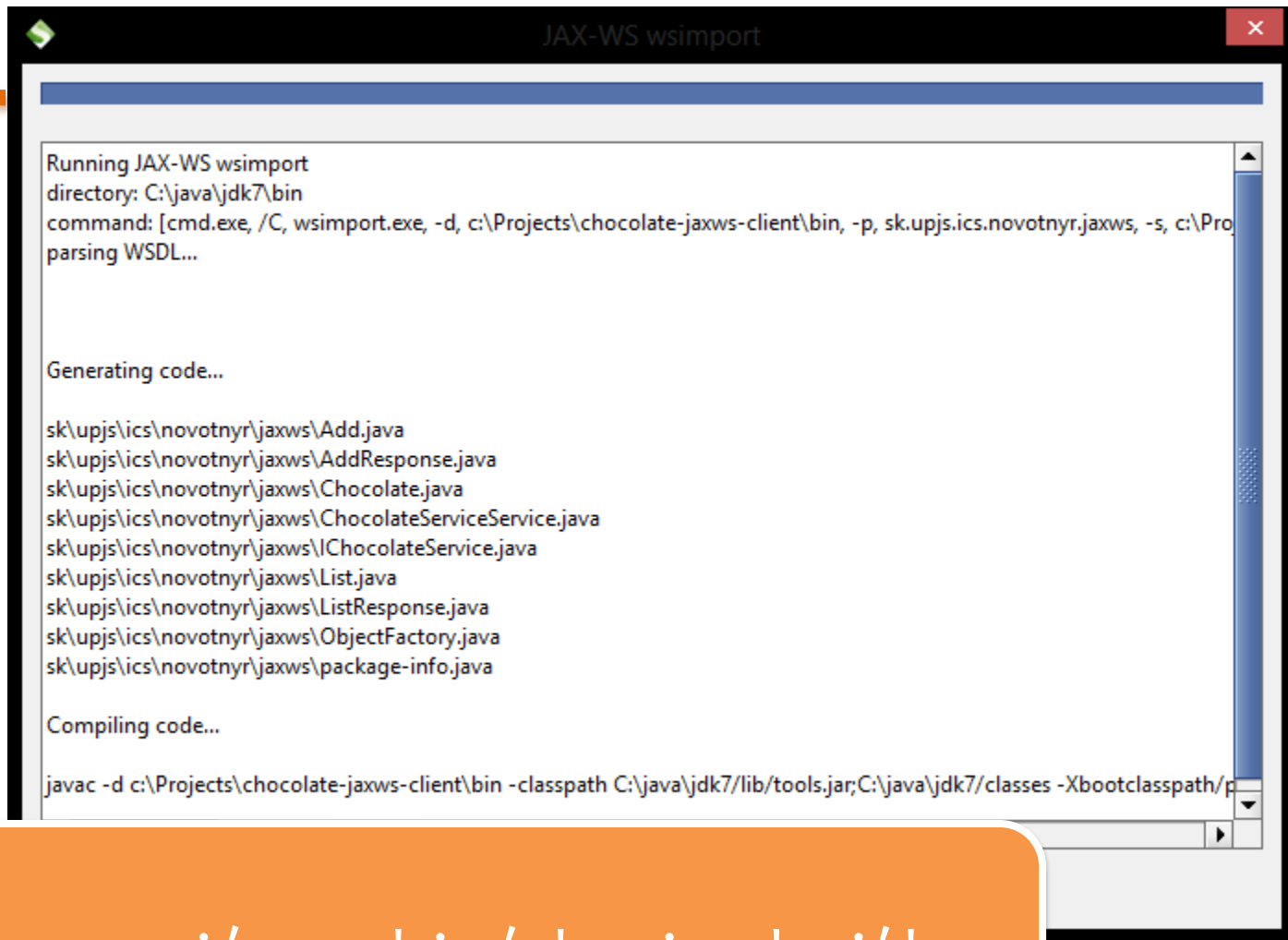
Catalog:

Binding files:

wsdlLocation:

Keep: (keep generated files)

Generovat!



The screenshot shows a command window titled "JAX-WS wsimport". The text inside the window is as follows:

```
Running JAX-WS wsimport
directory: C:\java\jdk7\bin
command: [cmd.exe, /C, wsimport.exe, -d, c:\Projects\chocolate-jaxws-client\bin, -p, sk.upjs.ics.novotnyr.jaxws, -s, c:\Pro
parsing WSDL...

Generating code...

sk\upjs\ics\novotnyr\jaxws\Add.java
sk\upjs\ics\novotnyr\jaxws\AddResponse.java
sk\upjs\ics\novotnyr\jaxws\Chocolate.java
sk\upjs\ics\novotnyr\jaxws\ChocolateServiceService.java
sk\upjs\ics\novotnyr\jaxws\IChocolateService.java
sk\upjs\ics\novotnyr\jaxws>List.java
sk\upjs\ics\novotnyr\jaxws>ListResponse.java
sk\upjs\ics\novotnyr\jaxws\ObjectFactory.java
sk\upjs\ics\novotnyr\jaxws\package-info.java

Compiling code...

javac -d c:\Projects\chocolate-jaxws-client\bin -classpath C:\java\jdk7\lib\tools.jar;C:\java\jdk7\classes -Xbootclasspath/p
```

vygenerujú sa binárky i zdrojáky

Tipy a triky

- generujte rovno do adresára **src/main/java** v projekte
 - v jednoduchých projektoch uľahčíte kompiláciu

SOAP